



SUMMIT STUDIO, P.C.
PATRICK HUBBELL, ARCHITECT
844 MAIN STREET, SUITE 102
LOUISVILLE, CO 80027

303-666-9100

These drawings are intended for use in conjunction with Master Sheet A1.1. Contact Architect if A1.1 is missing.

© 2009 SUMMIT STUDIO, P.C.
These drawings are for use on the project named in the title block. Any other use of all or parts of these drawings without written permission of the Architect is prohibited.

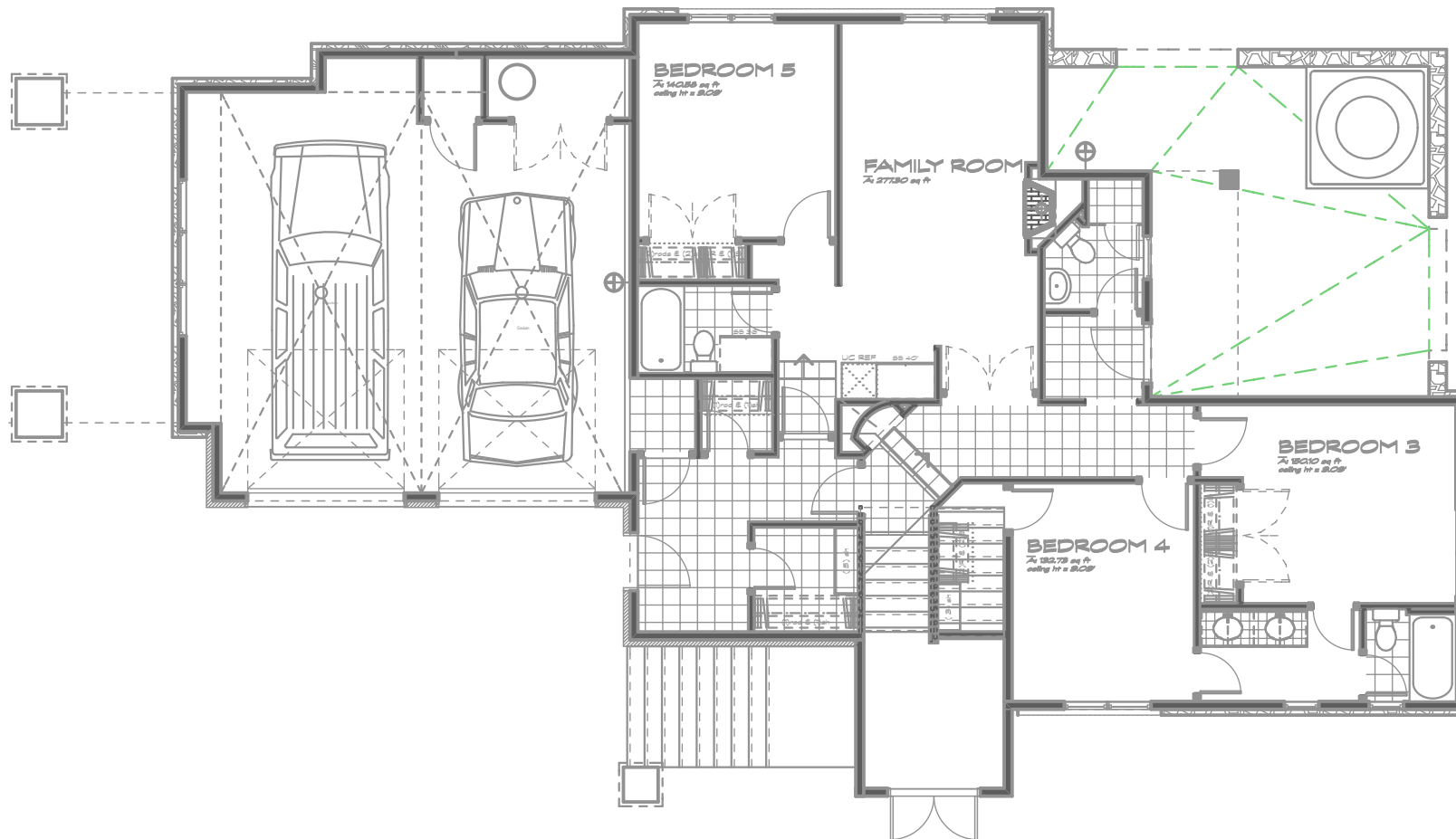
67 MASTERS COURT

Copper Mountain, Colorado

DATE:

01

Layout
1 of 3



1

LOWER LEVEL

1" = 10'



SUMMIT STUDIO, P.C.
PATRICK HUBBELL, ARCHITECT
844 MAIN STREET, SUITE 102
LOUISVILLE, CO 80027
303-666-9100



These drawings are intended for use in conjunction with Master Sheet A1.1. Contact Architect if A1.1 is missing.

© 2009 SUMMIT STUDIO, P.C.
These drawings are for use on the project named in the title block. Any other use of all or part of these drawings without written permission of the Architect is prohibited.

67 MASTERS COURT

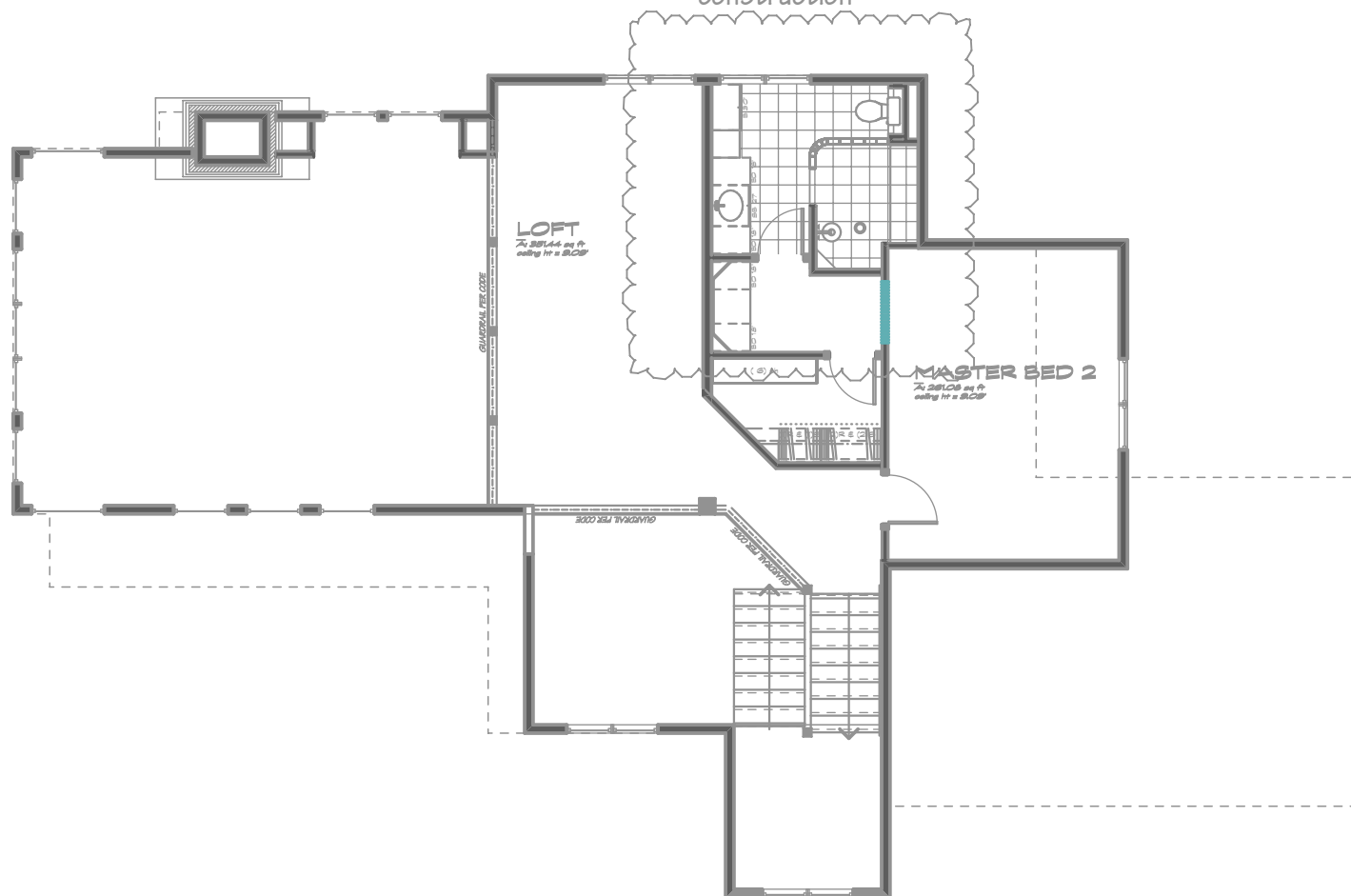
Copper Mountain, Colorado

DATE:



Layout
3 of 3

Note:
This bathroom was revised during
construction



1

UPPER LEVEL

1" = 10'



SUMMIT STUDIO, P.C.
PATRICK HUBBELL, ARCHITECT
844 MAIN STREET, SUITE 102
LOUISVILLE, CO 80027

303-666-9100

These drawings are intended for use in conjunction with Master Sheet A1.1. Contact Architect if A1.1 is missing.

© 2009 SUMMIT STUDIO, P.C.
These drawings are for use on the project named in the title block. Any other use of all or parts of these drawings without written permission of the Architect is prohibited.

67 MASTERS COURT

Copper Mountain, Colorado

DATE:

02

Layout
2 of 3



1

MAIN LEVEL

1" = 10'